

## TROUBLESHOOTING

JACK WILL NOT LIFT LOAD	JACK WILL NOT HOLD LOAD	JACK WILL NOT LOWER	POOR JACK LIFTING	WILL NOT LIFT TO FULL EXTENSION	CAUSES AND SOLUTIONS
X	X		X		Release valve is not completely closed (Turn handle clockwise).
X					Air Supply Inadequate
X					Weight Capacity Exceeded.
X			X		Air is in the hydraulics. Purge air from system.
X	X		X	X	Low oil level. Add oil as required.
		X			Oil reservoir is overfilled: Drain excessive oil. Lubricate moving parts.
		X			Jack is binding or foreign obstruction
X	X		X		Power unit malfunctioning. Replace the power unit.

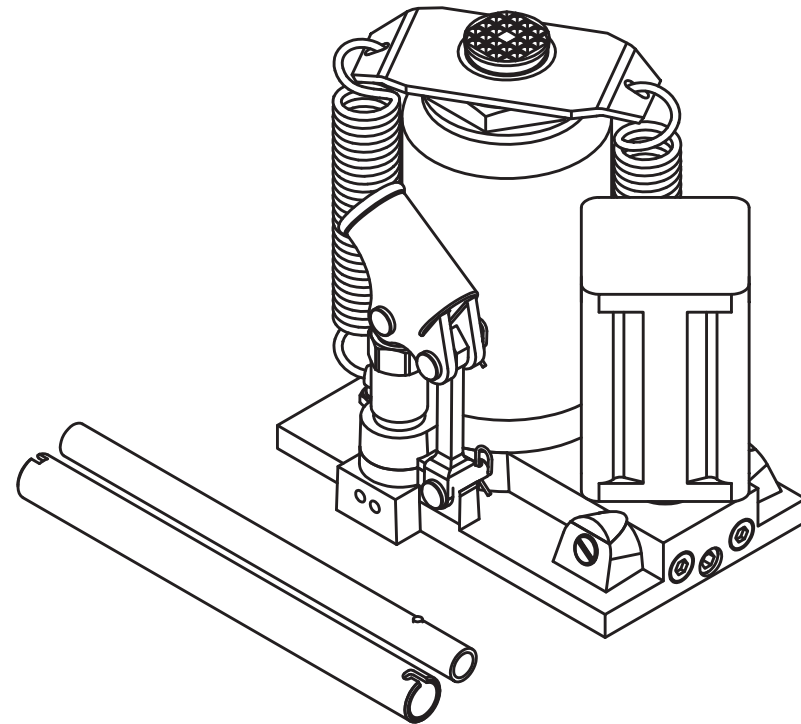
*Torin*  
**BLACK JACK**®



FOR CUSTOMER SERVICE  
**1800 833 800**

Imported by  
SJS Investment Pty Ltd  
Bayswater WA6053

*Torin*  
**BLACK JACK**®  
**OWNER'S MANUAL**  
**20000KG AIR BOTTLE JACK**  
**MODEL:BJ-2000VJA**



### WARNING:

Read carefully and understand all **ASSEMBLY AND OPERATION INSTRUCTIONS** before operating. Failure to follow the safety rules and other basic safety precautions may result in serious personal injury.

## PECIFICATIONS

Working Load Limit: 20000kg  
Height Lowered: 267mm  
Height Raised: 515mm  
Air Pressure: 0.75~0.85Mpa

## GENERAL SAFETY RULES

**WARNING:** Read and understand all instructions. Failure to follow all instructions listed below may result in serious injury.

**CAUTION:** Do not allow persons to operate or assemble this Jack until they have read this manual and have developed a thorough understanding of how the Jack works.

**WARNING:** The warnings, cautions, and instructions discussed in this instruction manual cannot cover all possible conditions or situations that could occur. It must be understood by the operator that common sense and caution are factors that cannot be built into this product, but must be supplied by the operator.

## SAVE THESE INSTRUCTIONS

## IMPORTANT SAFETY CONSIDERATIONS

### JACK USE AND CARE

**Do not modify the Jack in any way.** Unauthorized modification may impair the function and/or safety and could affect the life of the equipment. There are specific applications for which the Jack was designed.

**Always check of damaged or worn out parts before using the Jack.** Broken parts will affect the Jack operation. Replace or repair damaged or worn parts immediately.

**Store idle Jack.** When Jack is not in use, store it in a secure place out of the reach of children. Inspect it for good working condition prior to storage and before re-use.

**Not for use by children** or people with reduced mental capacity.

**Do not use under the influence of drugs or alcohol.**

**Ensure children and other bystanders** are kept at a safe distance when using crane.

## INSPECTION

Inspect the jack carefully before each use. Ensure the jack is not damaged, excessively worn, or missing parts.

Do not use the jack unless it is properly lubricated.

Using a jack that is not in good clean working condition or properly lubricated may cause serious injury.

Inspect the work area before each use. Make sure it is free and clear of any potential hazards.

## DO NOT OPERATE OR REPAIR THIS EQUIPMENT WITHOUT READING THIS MANUAL.

To maintain the Transmission Jack and user safety, the owner is responsible for reading and following these instructions.

Inspect the service jack for proper operation and function.

Keep instructions readily available for equipment operators. Make certain all equipment operators are properly trained; understand how to safely and correctly operate the unit.

Allow unit operation only with all parts in place and operating properly.

Use only genuine replacement parts. Service and maintain the unit only with authorized or approved replacement parts negligence will make the jack unsafe for use and void the warranty.

Carefully inspect the unit on a regular basis and perform all maintenance as required.

Store these instructions in the handle of your jack. Keep all decals on the unit clean and visible.

Safety: always follow safety precautions when installing and operating this jack.

Before proceeding ensure that you fully understand and comprehend the full contents of this manual.

Failure to operate this equipment as directed may cause injury or death.

The distributor is not responsible for any damages or injury caused by improper use or neglect

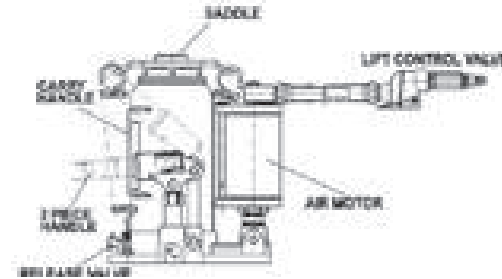
### Always use Jack Stands!

**DO NOT USE** wood blocks or any other non-approved load sustaining devices. The manufacturer only warrants loads to be sustained by jack stands that meet current ASME standards.

**DO NOT USE** wood blocks or any other non-approved lifting devices for a means of lifting with the jack and or load being raised. Failure to heed these warnings may cause injury or death.

## ASSEMBLY

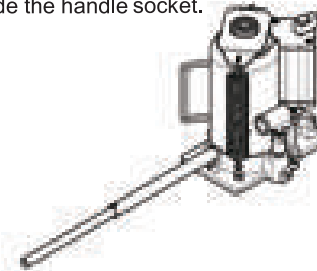
1. Familiarize yourself with the jack.



2. Attach the 2 handle pieces making sure to align the holes on both sections.



3. Line up the handle to the handle socket located on the side of the jack, then insert the handle inside the handle socket.



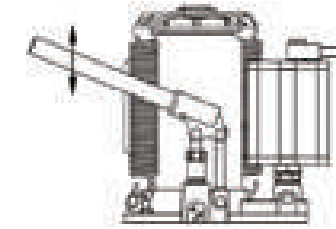
4. Secure the handle in place inside the handle socket. Without any vehicle on the jack. Cycle the lift up and down several times to insure the hydraulic system is operating properly. (Perform to the Air Purge Procedure before first use.)

## SYSTEM AIR PURGE PROCEDURE

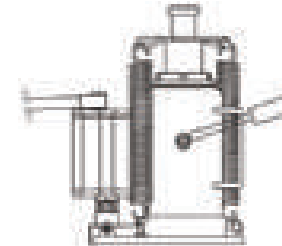
### IMPORTANT: BEFORE FIRST USE

Perform the following Air Purge Procedure to remove any air that may have been introduced into the hydraulic system as a result of product shipment and handling. This step is to be completed without any weight on the jack.

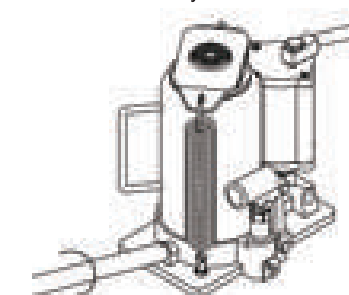
1. Turn release valve counterclockwise on full turn to the open position. 2. Rapidly pump the handle 6-8 times. Leave handle in down position to expose oil fill plug.



3. With a flat blade screwdriver, push the oil fill plug slightly to the side to purge trapped air from system. (Use caution not to tear or puncture the oil plug.)

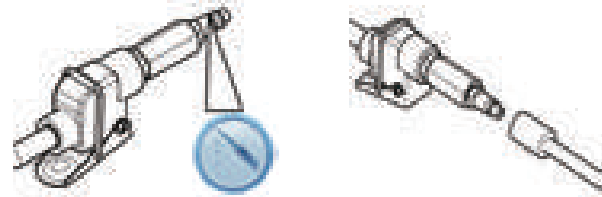


4. Turn release valve clockwise to the closed position. 5. Jack is now ready for use. Check for proper pump action.



## BEFORE USE

1. Before using this product, read the owner's manual completely and familiarize yourself thoroughly with the product and the hazards associated with its improper use.
2. Perform the air purge procedure. (See previous instructions for system purge procedure.)
3. Pour a teaspoon of good quality, air tool lubricant into the air supply inlet of the lift control valve. (See illustration) Connect to air supply and operate for 3 seconds to evenly distribute lubricant.

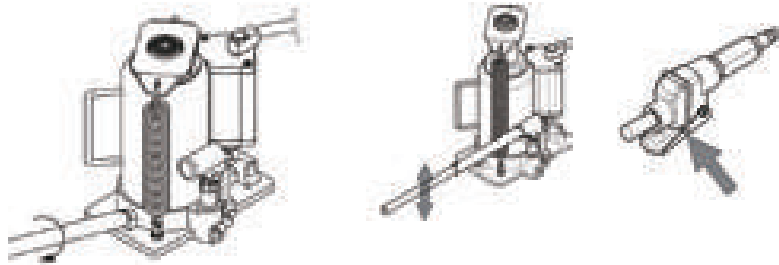


4. Check and that the pump operates smoothly before putting into service.
5. This product is fitting use standard 1/4" NPT air fitting. If changing the fitting is required, install a 1/4" NPT fitting of your choice, ensure that thread tape or compound is used to seal connection.
6. Inspect before each use. Do not use if bent, broken or cracked components are noted.

## OPERATION

### RAISING THE JACK

1. Block the vehicle's wheels for lifting stability. Secure the load to prevent inadvertent shifting and movement
2. Position the jack near desired lift point.
3. Set the Parking Brake in the vehicle.
4. Refer to the vehicle manufacturer owner's manual to locate approved lifting points on the vehicle. Position the jack so that the saddle is centered and will contact the load lifting point firmly.
5. Assemble the handle, ensure that spring clips align with slots.
6. Close the release valve by turning it clockwise until it is firmly closed.



7. Before raising the vehicle double check and verify the saddle is centered and also has full contact with the lifting point.
8. Pump handle or squeeze air trigger to lift until saddle contacts load. (To stop air operation, simply release the grip on the lift control valve.) Continue to pump the jack handle to lift the vehicle to the desired height. After lifting, support the load with appropriately rated vehicle support stands before working on the vehicle.

**CAUTION:** NEVER WIRE, CLAMP OR OTHERWISE DISABLE THE LIFT CONTROL VALVE TO FUNCTION BY ANY MEANS OTHER THAN BY USING THE OPERATOR'S HAND. USE THE HANDLE PROVIDED WITH THIS PRODUCT OR AN AUTHORIZED REPLACEMENT HANDLE TO ENSURE PROPER RELEASE VALVE OPERATION. DO NOT USE EXTENSIONS ON THE AIR HOSE OR ON THE OPERATING HANDLE.

### LOWERING THE JACK

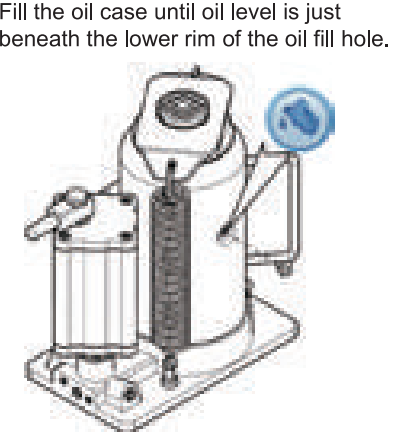
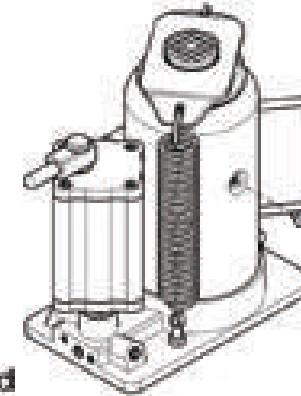
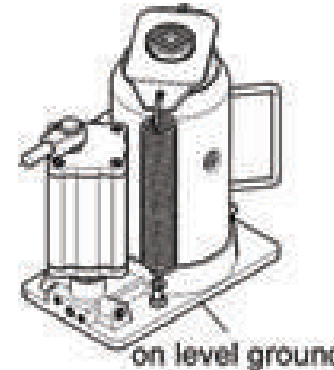
1. Raise load high enough to allow clearance for the jack stands to be removed, then carefully remove jack stands.
2. Remove support stands.
3. Grasp the handle firmly with both hands. Securely hold on to the jack handle so your hands do not slip and ensure the release valve does not rapidly lower.
4. Carefully open the Release Valve by slowly turning the handle counterclockwise. (Do not allow bystanders around the jack or under the load when lowering the jack.)
5. After removing jack from under the load, push ram and handle sleeve down to reduce exposure to rust and contamination.



**WARNING:** USE EXTREME CAUTION WHEN LOWERING THE JACK. THE JACK HANDLE MAY TURN RAPIDLY. OPENING THE RELEASE VALVE TOO FAST CAN CAUSE THE JACK TO LOWER RAPIDLY. FAILURE TO HEED THESE WARNINGS COULD CAUSE SERIOUS INJURY OR DEATH.

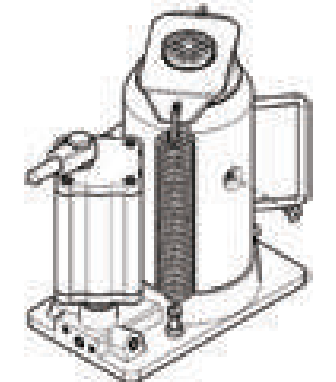
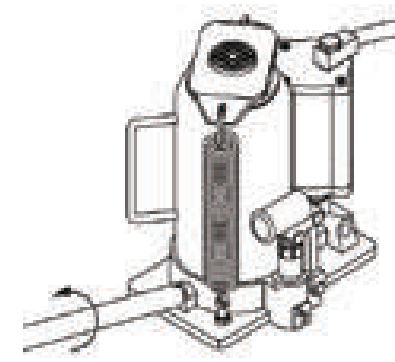
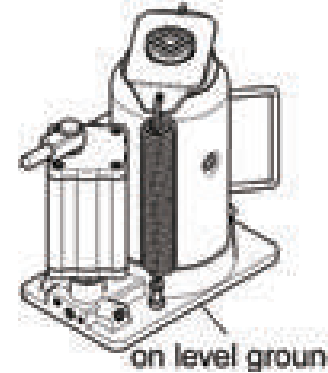
### TO ADD JACK OIL:

1. Position the jack on level ground and lower the saddle.
2. Remove the oil plug.
3. Fill the oil case until oil level is just beneath the lower rim of the oil fill hole.



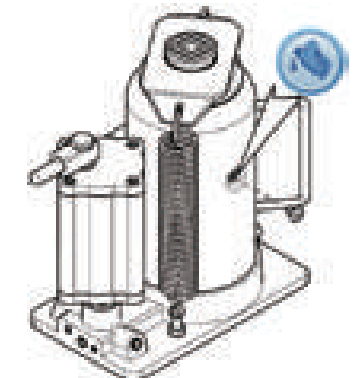
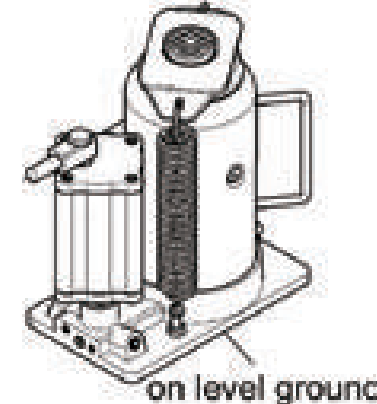
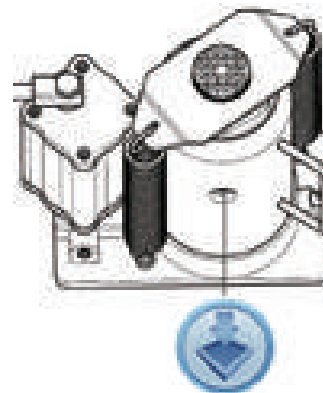
### TO REPLACE JACK OIL:

1. Position the jack on level ground and lower the saddle.
2. Open release valve by turning handle counter-clockwise (4 full turns).
3. Remove the oil fill plug.

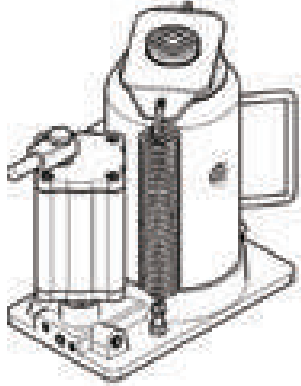


4. Turn the jack on its side so that old oil will drain from the oil fill hole.
5. Position the jack on level ground and lower the saddle.
6. Fill the oil case until oil level is just beneath the lower rim.

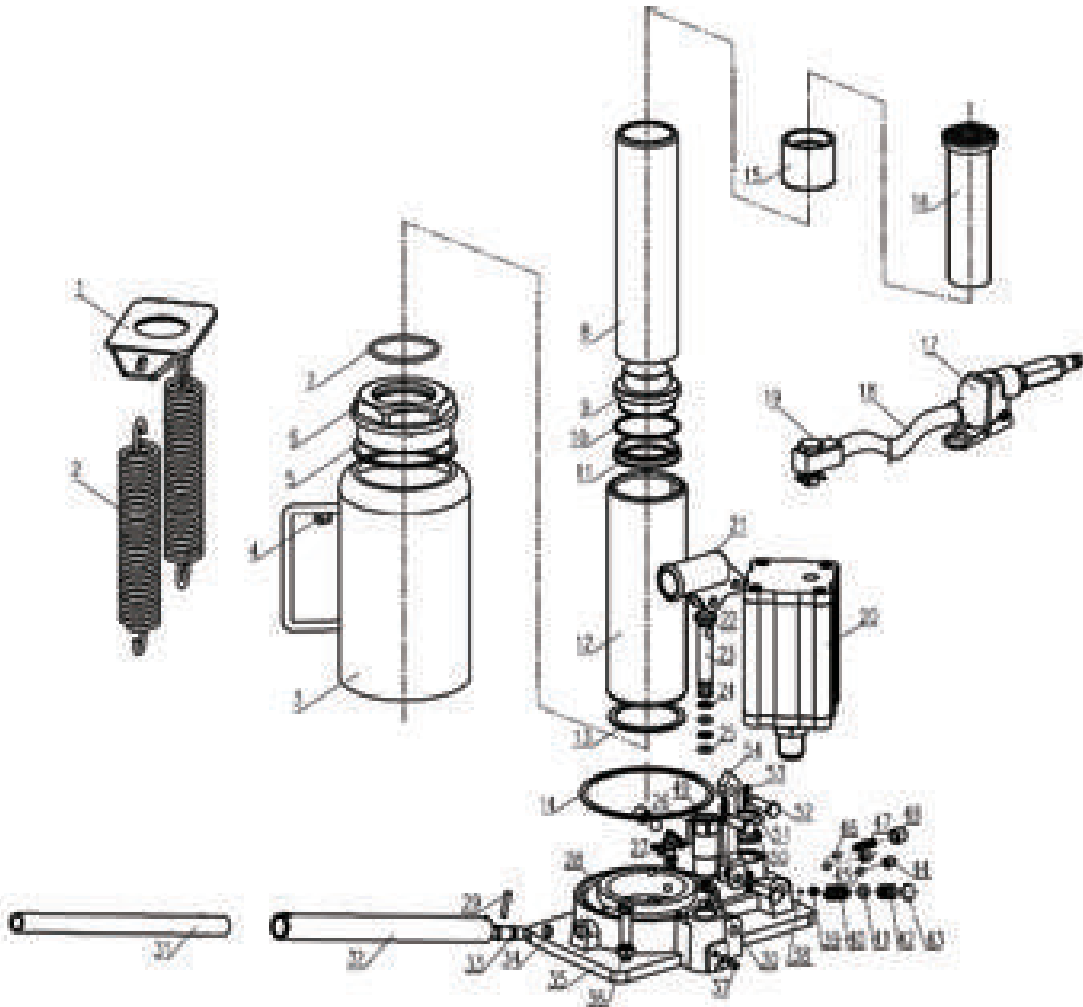
**KEEP DIRT AND OTHER MATERIAL CLEAR WHEN POURING.**



7. Replace oil plug.
8. Perform the Air Purge Procedure.



## ASSEMBLY DIAGRAM



## PARTS LIST

Part#	Description	Part No.	Qty.
1	Spring Plate	TQ20002-02	1
2	Spring	TQ20002-36a	2
3	Reservoir	TQ20002.1	1
4	Filler Plug	QYL8-29	1
5	Cup Seal	QYL20-03	1
6	Top Nut	TQ20002-05	1
7	O-Ring42.5X3.55	GB3452.1	1
8	Ram	TQ20002-06	1
9	Piston	TQ20002-43	1
10	Cup Seal	TQ20002-42	1
11	Y-Ring	TQ20002-41	1
12	Cylinder	TQ20002-07a	1
13	Seal Ring	QYL16-12A	1
14	Seal Ring	TQ20002-14	1
15	Threaded sleeve	QYL16-02A	1
16	Extension Screw	QYL16-01A	1
17	Pneumatic switch	TQ22001.9a	1
18	Air Hose	TQ22001-07	1
19	Connector	TQ22001.8	1
20	Air Motor	TY22001.2	1
21	Handle Sleeve	QYL8-22	1
22	Dust Ring	QYL8-09	1
23	Pump Plunger	TQ12002-16	1
24	Seal Ring	TQ12002-17	2
25	O-Ring 6.5X3	TQ12002-18	2
26	Grease filter	T90403-35	1
27	Ball stopper	QYL20D-42	2
28	Spring screw M8	TQ20002-37	1
29	Pin D4X22	GB119	1
30	Washer	TQ20002-20	2
31	Handle	TQ20002-38	1
32	Handle	TQ20002-39	1
33	Release Valve	QYL8-25A	1
34	O-Ring 7.7X1.9	QLQ2.1-17	1
35	Base	TQ20002-18	1
36	Nut M8	GB6170	2
37	Conical Screw M8	QYL8-11	2
38	Ball 3	GB308	1
39	Spring Seat	TQ22001.1-24	1
40	Spring	QLQD2A.2-18	1
41	O-Ring 5.8X2.8	QLQ2.1-14	1
42	Regulating Screw	T910004-38	1
43	Cover	T910004-39	1
44	Screw M8X8	GB77	2
45	Ball 6	GB308	8
46	Ball 9	GB308	2
47	Spring	TQ20002-21	1
48	Screw M12X1.25X10	GB77	2
49	Pump Cylinder	QYL8-10	1
50	Seal Ring	/	1
51	Platen	/	1
52	Axis	QYL8-19	3
53	Pin	QLQD2B.2-5	3
54	Link	QYL8-08	1