

Torin
BLACK JACK®

OWNER'S MANUAL
12" (305MM) HYDRAULIC VEHICLE
POSITIONING JACK

Working Load Limit: 680kg
MODEL:BJ-12GO

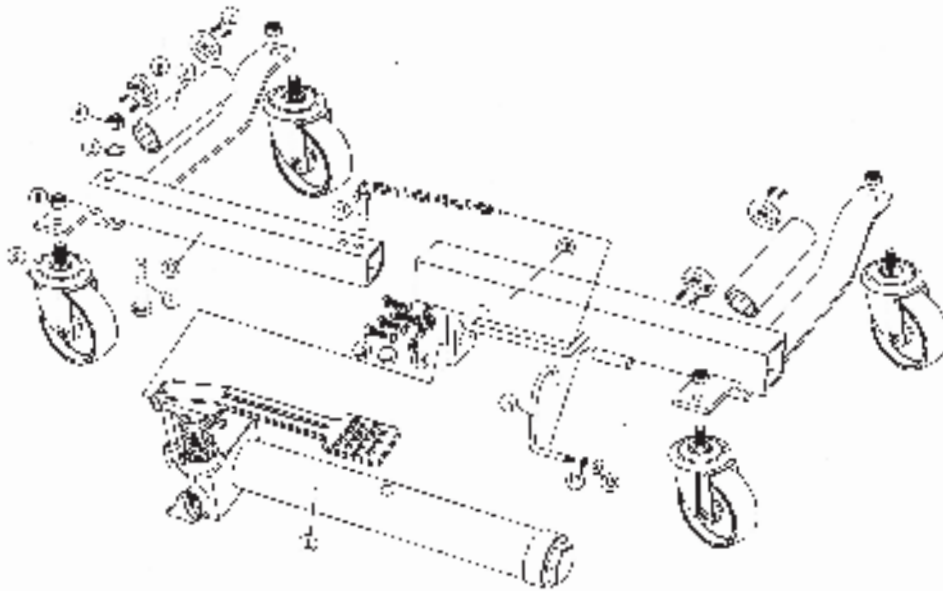
Torin
BLACK JACK®

FOR CUSTOMER SERVICE
1800 833 800

Imported by
SJS Investment Pty Ltd
Bayswater WA6053



PARTS LIST OF VEHICLE POSITIONING JACK



Ref #	Description	QTY	Ref #	Description	QTY
1	Ham Assembly	1	10	Left Frame	1
2	Bolt M 6x115	1	11	Lock Pin with Chain	1
3	Flat Washer Ø16	1	12	Screw M6x20	4
4	NL: M 6	1	13	Lock Washer Ø16	4
5	Roller Raceway	4	14	Flat Washer Ø6	4
6	Roller	2	15	Right Frame	1
7	Raceway Lock Screw	8	16	Hook	1
8	Lock Nut M12	4	17	Washer Ø1 Hook	1
9	4" Swivel Caster	4	18	NL: for Hook	1

SPECIFICATION

NO. MODEL	BJ-12GO
LIFTING CAPACITY PER SKATE	680 KG
MAXIMUM OPENING	1000 MM
WHEEL WIDTH	305 MM
WEIGHT	18 KG

SAFETY GUIDELINES

Do not operate this skate on inclined ground. The skate must be used only on level, solid ground. Unanticipated motion will occur as soon as the jack lifts the tyre from the ground.

Wheel Skates must be used in pairs at either the front or rear of the vehicle.

Do not over load the skate beyond the load rating of 680 kg.

Do not start the vehicle's engine or drive with the skate in use. Skates are designed for hand manoeuvring of vehicles only.

Do not use the skate to lift tyres wider than 305 mm.

Ensure the Wheel Skates are free to move and that there are no obstructions in the area of use.

Ensure there are no obstructions beneath the vehicle when it is to be lowered.

Do not attempt to push the skate over obstacles. They are designed to be used on a level and smooth surface only.

After lifting be sure to lock the pin in place before operating. Pull the pin out after finishing and then release the valve.

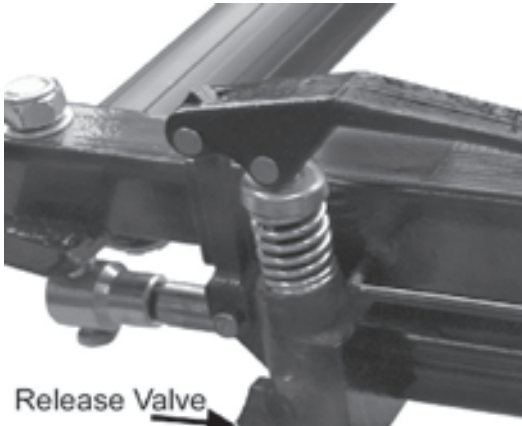
WARNING

Do not get under a vehicle supported only by a vehicle position jack, use support stands.

OPERATING INSTRUCTIONS



Place the skate on the floor and press down on the pedal to release the pedal lock. Pull out the lock pin from the frame.



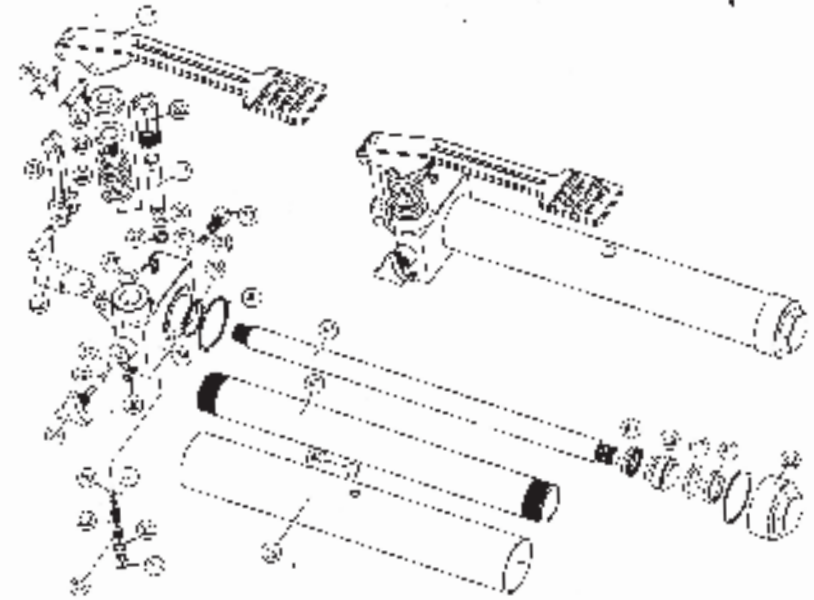
Release Valve

Before operating open the release valve by turning the hand wheel counter clockwise. Expand the skate enough to place around the tyre and position it so both rollers contact the tyre tread. To obtain the best control of the skate while expanding around the tyre place your left hand on top of the left side axle and your right hand in the centre of the pedal. Close the release valve by turning the hand wheel clockwise.

To lift the tyre flip the directional lever up and place foot on to the pedal pressing with smooth, even strokes. Cycle pedal until the tyre is lifted from the ground 25mm or less. After lifting, the lower the tyre is to the ground the more stable the skate will be. After lifting be sure to lock the pin in place before moving. Repeat the process on the other tyres and manoeuvre the vehicle as required.

To release the skate pull the pin out from the frame and open the valve by turning the hand wheel slowly counter clockwise. Skate may be removed only when the rollers disengage from the tyre.

PARTS LIST OF RAM



Ref #	Description	QTY	Ref #	Description	QTY
19	Foot Pedal	1	48	Knuckle Saw Ring	1
20	Frame Pin Ø8x29	2	36	Release Valve	1
21	Connecting Rod	1	40	Tank Washer	2
22	Connecting Bolt	1	41	Ram	1
23	Spring Cover	1	42	Cylinder	1
24	Flat Washer	1	45	Oil Plug	1
26	Spring	1	44	Tank	1
25	Pump	1	46	Y-Ring	1
27	Frame Core	1	48	Pin 1	1
28	O Ring	1	47	Piston O Ring	1
29	Back-Up Ring	1	46	Knuckle Saw Ring	1
30	Screw M10x 20	1	49	Tank Nut	1
31	Small Spring	1	50	Steel Ball OE	1
32	Steel Ball Ø8	3	51	Steel Ball Seat	1
33	Cylinder Copper Washer	1	52	Safety Valve Spring	1
34	Ram Base	1	53	Safety Valve Screw	1
35	Copper Washer	1	54	O Ring	1
38	Screw M5	2	55	Screw	1
37	Steel Bar 36	1			